



Not just tile. Its a unique style.

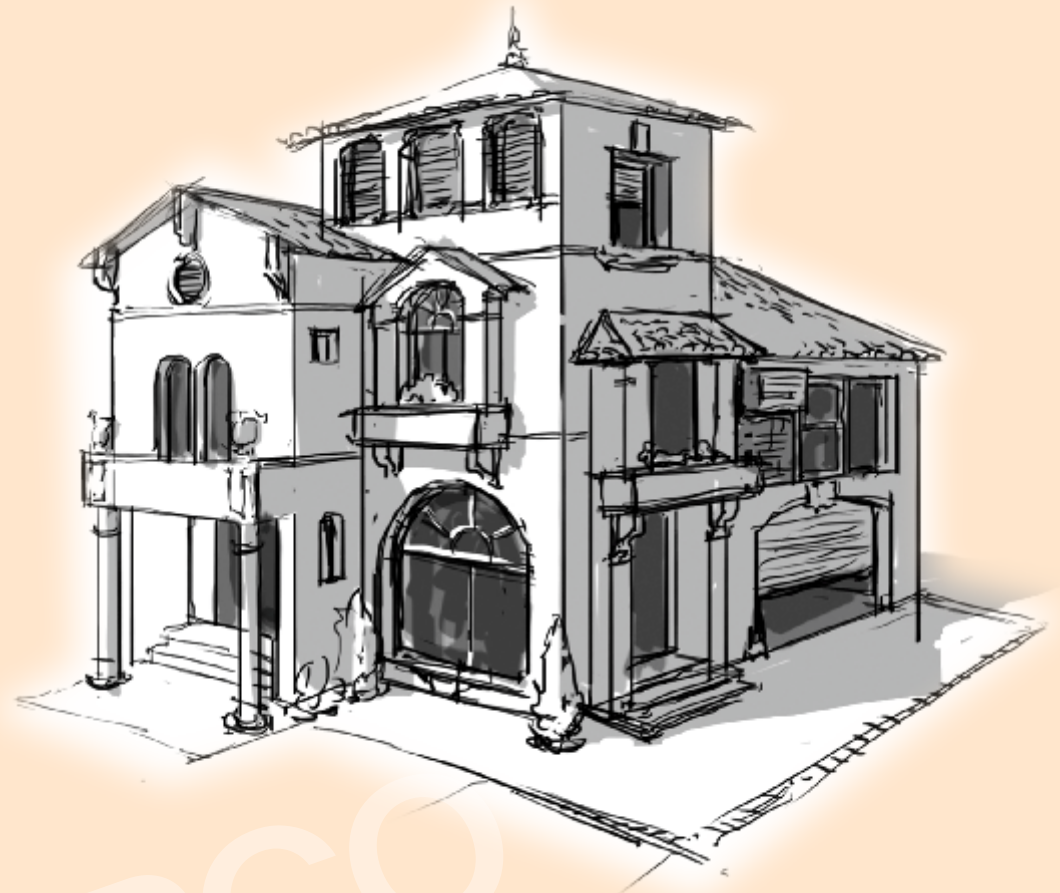
# TAPCO

## Strengthened by a great tradition

We, the S.N Group Of Companies started its operations in 1980s as a clay tile manufacturing unit. The product range consisted of traditional roofing and flooring tiles. To meet the increased demand for the products, the group established two more manufacturing units later. Now the group has 3 manufacturing units and a wide and well managed marketing and distribution network. As a part of diversification, in the recent years the company has entered into the import and export of roofing and flooring tiles.

Now we are introducing world class natural clay tiles in the brand name of **TAPCO**. The products are imported from Vietnam and the range consist of high quality roofing, flooring and outdoor paving tiles which has got a diversified usage options. We also introduced premium quality imported ceramic roofing tiles in range of colours to choose from.

Being a well established and experienced business group in the field of tile manufacturing and marketing, we are committed to give world class products to our customers at an affordable price range. We are very confident that the **TAPCO** is going to be one of the well known and well accepted brands among the roofing and flooring tiles. The group is expected to come with more allied products with world class quality, in the years to come. Our vision is to become one of the top brands in the construction material segment by providing with best quality products and services.



TAPCO



All TAPCO premium quality roofing tiles are manufactured from pure white clay. Its extra strong, light weight and has got extra thermal insulation capacity.



**EXTRA STRONG**



**LIGHT WEIGHT**



**ANTI FUNGAL  
PROPERTIES**



**HIGH THERMAL  
INSULATION CAPACITY**



**EXTRA  
DURABILITY**

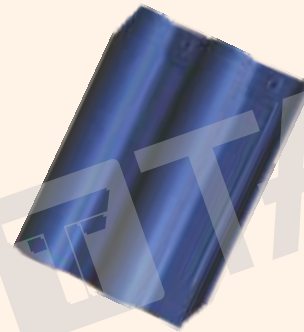


**EUROPEAN  
STANDARDS**



## Elbano Elegant Series

When it comes to Attraction & Protection  
we are inspired by nature



BLUE SHINGLE



TERRACOTTA



DOUBLE COLOR



SHINGLE DOT RED



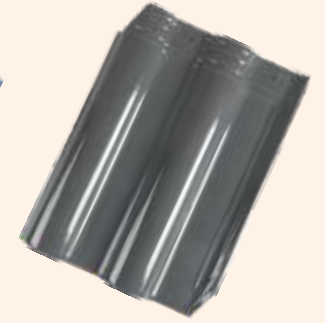
COFFEE BROWN



DARK GREY



BLUE GREY



GREY GLOSSY

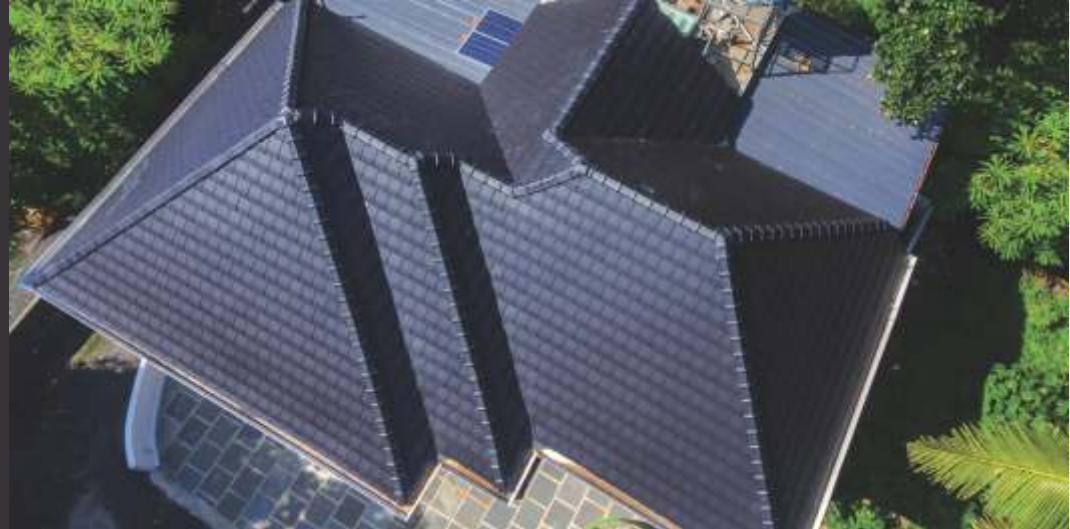
|           |                     |
|-----------|---------------------|
| Material  | 100% White Clay     |
| Weight    | 2.30 Kg.            |
| Size      | 300 x 400 mm        |
| Coverage  | 1 Tile For 1 Sq.Ft. |
| Pack Size | 9Tiles              |

**MORE COLOURS AVAILABLE ON REQUEST**



## German Flat Series

A Shell That Cover Well



|           |                        |
|-----------|------------------------|
| Material  | 100% White Clay        |
| Weight    | 2.7 Kg.                |
| Size      | 270 x 400 mm           |
| Coverage  | 1.16 Tile For 1 Sq.Ft. |
| Pack Size | 7 Tiles                |



BLACK MATT



COFFEE BROWN



TERRACOTTA



BLUE GREY

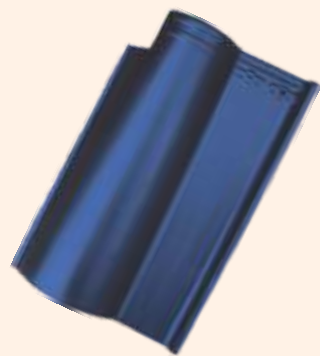
MORE COLOURS AVAILABLE ON REQUEST





## Roman Royal Series

When it comes to Beauty & Cuteness  
Our goal is set by Nature



BLACK MATT



BLUE GREY



VELVET BLACK



RED SHINGLE



TERRACOTTA



VELVET RED



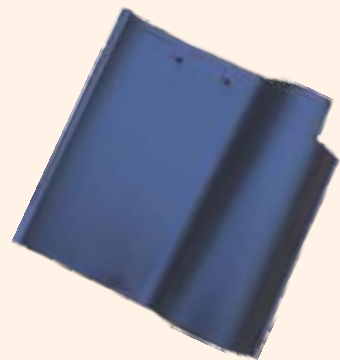
|           |                        |
|-----------|------------------------|
| Material  | 100% White Clay        |
| Weight    | 2.9 Kg.                |
| Size      | 260 x 400 mm           |
| Coverage  | 1.30 Tile For 1 Sq.Ft. |
| Pack Size | 7 Tiles                |

**MORE COLOURS AVAILABLE ON REQUEST**



## Spanish Peak Series

Not just colour, a safety layer



BLACK MATT



TERRACOTTA



RED SHINGLE



WINE RED



BLUE GREY

|           |                        |
|-----------|------------------------|
| Material  | 100% White Clay        |
| Weight    | 2.4 Kg.                |
| Size      | 305 x 305 mm           |
| Coverage  | 1.39 Tile For 1 Sq.Ft. |
| Pack Size | 8 Tiles                |

MORE COLOURS AVAILABLE ON REQUEST



## TAPCO KERALA TILES & FRENCH FLAT SERIES



KERALA SERIES 270 x 400 m.m



FRENCH SERIES 270 x 400 m.m







## TAPCO Flat Textured & Plain Series



*Textured Series 270 x 400 m.m*



*Plain Series 270 x 400 m.m*





## POTRO & JAPAN SERIES



*POTRO SERIES 300 X 400 m.m*

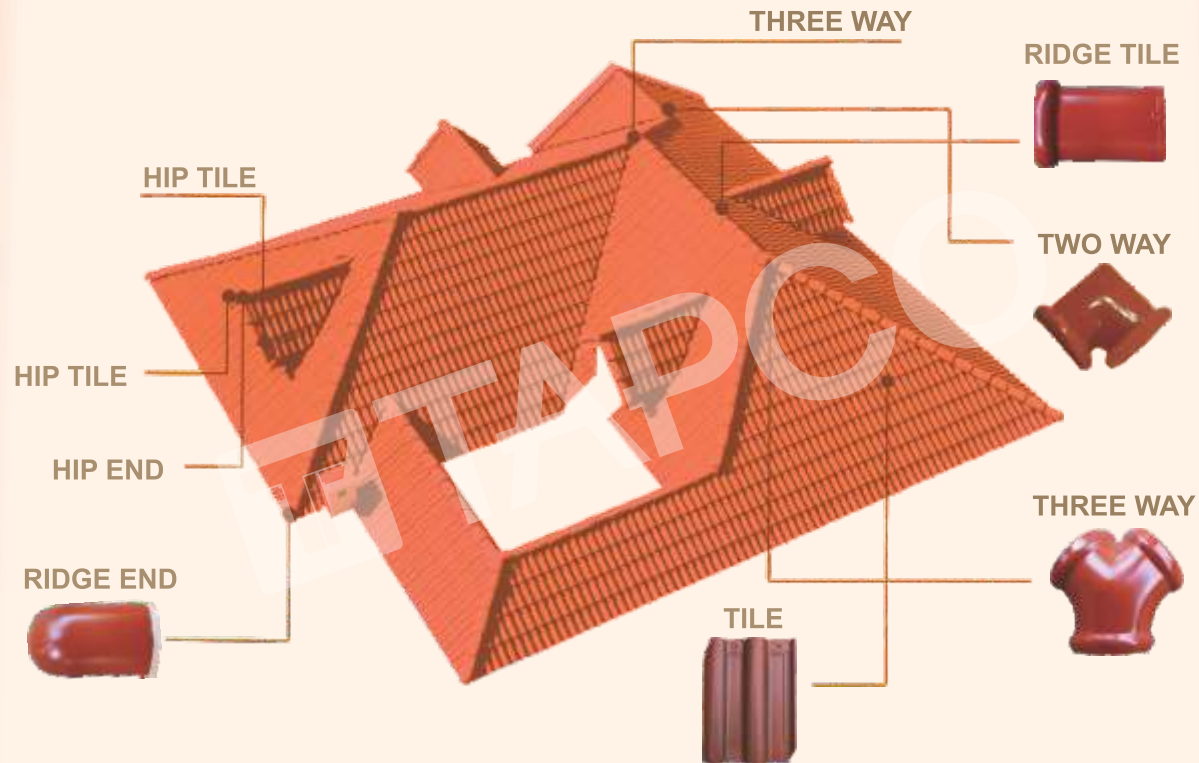


*JAPAN SERIES 305 X 305 m.m*





## ROOFING ACCESSORIES FOR ELBANO, SPANISH & ROMAN SERIES



## FLAT TILE ACCESSORIES





**H.O:**  
**Difot International Trading Co.**  
Choolissery P.O, Kulangattukara  
Thrissur, Kerala - 680 541  
Ph: +91 93 88 77 37 17, 93 87 17 37 17  
Email: difot2017international@gmail.com

**Bangalore Office:**  
**Difot International Trading Co.**  
1st Floor, No.30, Muthu Nilayam  
Deepa Nursing Home Road, Marathahalli  
Bangalore - 560037  
Ph: +91 8951 501 501

 [www.tapcotiles.com](http://www.tapcotiles.com)

 **CUSTOMER CARE**  
**+91 93871 73717**

 **+919388773717**

**TAPCO EXCLUSIVE OUTLETS:** KOTTAYAM ALAPPUZHA MALAPPURAM KOZHIKKODE

 **Tapco**